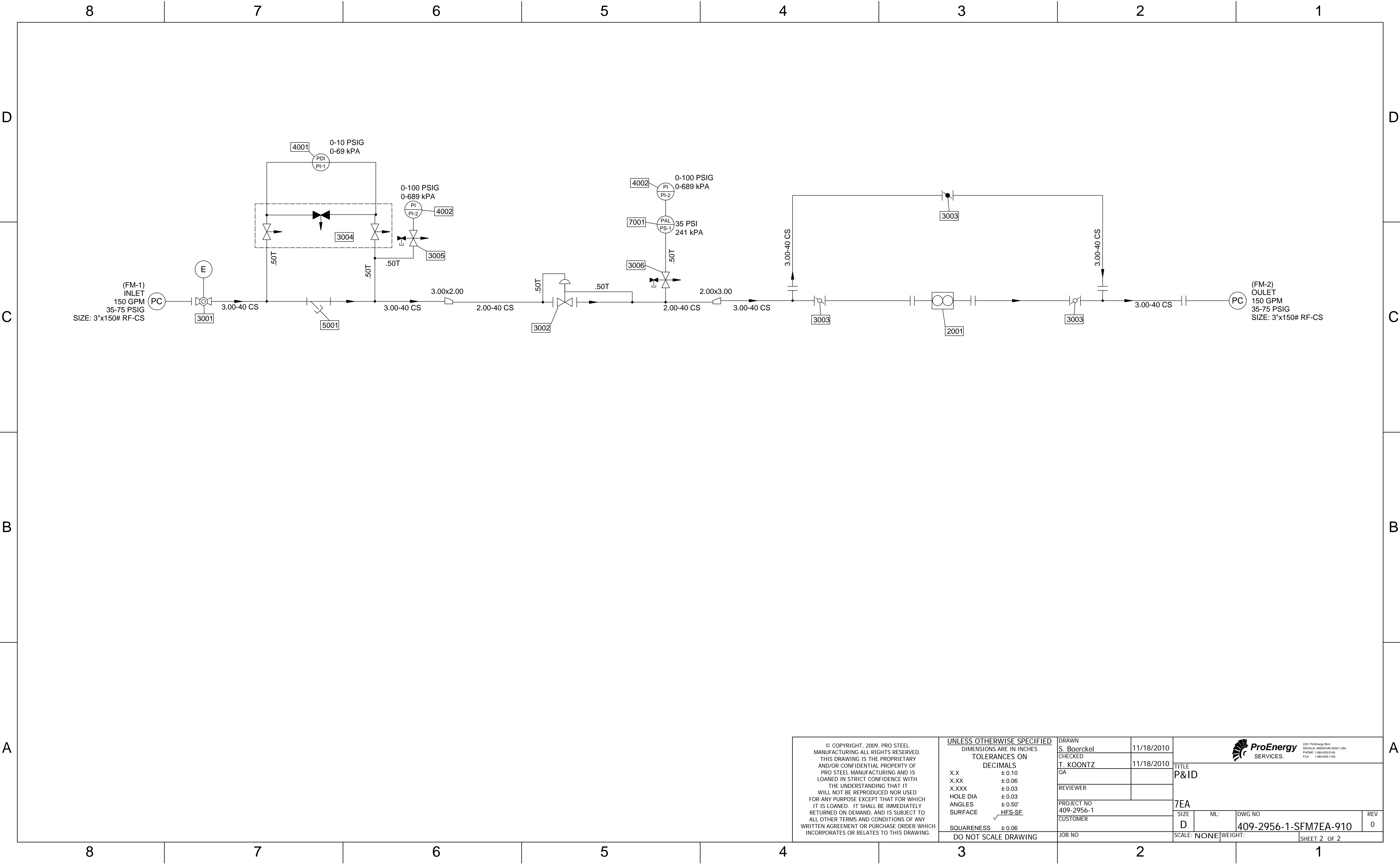



8	7	6	5	4	3	2	1	
D								D
C								C
B								B
A								A

PARTS LIST						
ITEM	TAG	DEVICE	QTY	DESCRIPTION	PART No	MANUFACTURER
2001	FMM-1	FLOWMETER	1	FLOWMETER MODEL B-72D 425 GPM - 3"x150#	B070ACAAAACDAEA	BRODIE
3001	FMV-1	STOP VALVE	1	FAIL SAFE ELECTRIC ACTUATED BALL VALVE 3"x150#	CRC733F-3F	CR-TEC
3002	FMV2	PRESSURE REGULATOR VALVE	1	PRESSURE REDUCING REGULATOR VALVE 2"x150#	FS1098-472/15RF2/L/WS1	FISCHER
3003	FMV-3A FMV-3B FMV-3C	BUTTERFLY VALVE - METER INLET BUTTERFLY VALVE - METER OUTLET BUTTERFLY VALVE - METER BY-PASS	3	SERIES B5100 HIFG PERFORMANVE BUTTERFLY VALVE - 3"	B5110-02-F02-13/HL	CAMRON
3004	FMV-4	3-WAY NEEDLE VALVE	1	1/2" FNPT 3-WAY NEEDLE VALVE	SS-V3NBM8-F8	SWAGELOK
3005	FMV-5	BLOCK & BLEED NEEDLE VALVE	1	1/2" FNPT BLOCK & BLEED VALVE	SS-V2NBM8-F8-11486	SWAGELOK
3006	FMV-6	GAUGE VALVE ASSEMBLY	3	GAUGE VALVE 1/2" MNPT - 1/2" FNPT 1/2" MNPT BLEED PLUG 1/2" x 1/4" NPT BUSHING	M5VDC-44 V6VDC-4	ANDERSON GREENWOOD ANDERSON GREENWOOD
4001	PI-1	DIFFERENTIAL PRESSURE GAUGE	1	4.5" GAUGE 1/4" FNPTEND CONNECTIONS 0-10 PSID	120SC-12-00	MID-WEST
4002	PI-2	PRESSURE GUAGE	2	4.5" PRESSURE GAUGE SS 1/2" MNPT 0-200 PSIG	SGL-G0724N	DWYER
5001	FMS-1	STRAINER	1	80-MESH Y-STRAINER 3"x150# CAST STAINLESS	781-CS	MUELLER
7001	PS-1	PRESSURE SWITCH	1	SPDT SWITCH 35 PSIG	611G8005	CCS

© COPYRIGHT, 2009, PRO STEEL MANUFACTURING ALL RIGHTS RESERVED. THIS DRAWING IS THE PROPRIETARY AND/OR CONFIDENTIAL PROPERTY OF PRO STEEL MANUFACTURING AND IS LOANED IN STRICT CONFIDENCE WITH THE UNDERSTANDING THAT IT WILL NOT BE REPRODUCED NOR USED FOR ANY PURPOSE EXCEPT THAT FOR WHICH IT IS LOANED. IT SHALL BE IMMEDIATELY RETURNED ON DEMAND, AND IS SUBJECT TO ALL OTHER TERMS AND CONDITIONS OF ANY WRITTEN AGREEMENT OR PURCHASE ORDER WHICH INCORPORATES OR RELATES TO THIS DRAWING.						UNLESS OTHERWISE SPECIFIED DIMENSIONS ARE IN INCHES TOLERANCES ON DECIMALS X.X ± 0.10 X.XX ± 0.06 X.XXX ± 0.03 HOLE DIA ± 0.03 ANGLES ± 0.50' SURFACE <u>HFS-SF</u> SQUARENESS ± 0.06 DO NOT SCALE DRAWING		DRAWN S. Boerckel CHECKED T. KOONTZ QA REVIEWER PROJECT NO 409-2956-1 CUSTOMER	11/18/2010 11/18/2010	TITLE P&ID FUEL MANAGEMENT SPOOL 7EA SIZE D ML: DWG NO 409-2956-1-SFM7EA-910 REV 0		
REVISION HISTORY						SCALE: NONE		WEIGHT:		SHEET 1 OF 2		



© COPYRIGHT, 2009, PRO STEEL MANUFACTURING ALL RIGHTS RESERVED. THIS DRAWING IS THE PROPRIETARY AND/OR CONFIDENTIAL PROPERTY OF PRO STEEL MANUFACTURING AND IS LOANED IN STRICT CONFIDENCE WITH THE UNDERSTANDING THAT IT WILL NOT BE REPRODUCED NOR USED FOR ANY PURPOSE EXCEPT THAT FOR WHICH IT IS LOANED. IT SHALL BE IMMEDIATELY RETURNED ON DEMAND, AND IS SUBJECT TO ALL OTHER TERMS AND CONDITIONS OF ANY WRITTEN AGREEMENT OR PURCHASE ORDER WHICH INCORPORATES OR RELATES TO THIS DRAWING.	UNLESS OTHERWISE SPECIFIED DIMENSIONS ARE IN INCHES TOLERANCES ON DECIMALS		DRAWN S. Boerckel	11/18/2010	 <div>2201 ProEnergy Blvd SECALIA, MISSOURI 65201 USA PHONE: 1-800-829-5100 FAX: 1-800-829-1100</div>			
	X.X ± 0.10 X.XX ± 0.06 X.XXX ± 0.03 HOLE DIA ± 0.03 ANGLES ± 0.50° SURFACE <u>HFS-SF</u>		CHECKED T. KOONTZ	11/18/2010				
	SQUARENESS ± 0.06		OA		TITLE P&ID			
	DO NOT SCALE DRAWING		REVIEWER					
			PROJECT NO 409-2956-1		7EA			
			CUSTOMER		SIZE D	ML: DWG NO 409-2956-1-SFM7EA-910	REV 0	
			JOB NO		SCALE: NONE	WEIGHT:	SHEET 2 OF 2	